

THE DENNIS FALCONS



The right design concept for the 80's



Hestair
Dennis

Hestair Dennis Limited,
Woodbridge Works, Guildford,
Surrey GU2 5XP, England,
Telephone: 0483 71271,
Telex: 859211 & 859563.

THE FALCON

The Falcon Twins were born from a Dennis study of key operator requirements for the 80's. These highlighted a growing awareness of the vital need for:

- Lighter chassis and bodies to improve fuel consumption
- More simple drive lines to eliminate friction losses, reduce weight and cut maintenance
- Improved lower deck seating capacities
- Greater comfort for more discerning passengers

As a result we designed two new chassis both featuring:

- Air suspension as standard
- Engines positioned at the rear of the chassis in line with the direction of travel, eliminating angled drives, or bevel boxes.
- Low frames for city use
- Fully automatic gearboxes with integral retarder
- Integrated body to chassis construction



ON TWINS



THE FALCON V SERIES

This model features the Mercedes V.6 OM421 engine close coupled to the Voith or Maxwell transmission and driving straight in to the Kirkstall D65 rear axle.

The compact Mercedes power unit keeps the rear overhang short and enables the operator to fit an extra row of seats compared with conventional transverse engine designs.

The Falcon V Series is equally right for double or single deck operation



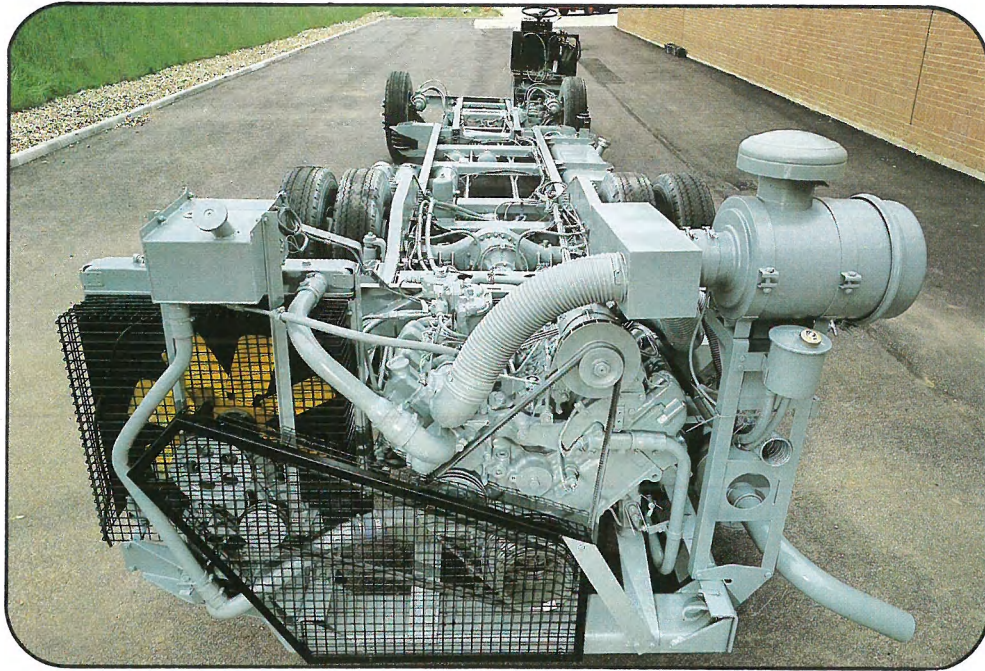
THE FALCON H SERIES

This model features the Gardner 6HLXB engine mounted horizontally and driving through a dropped centre axle to the Voith automatic transmission and retarder and thence back to the rear axle.

Primarily for use as a single deck vehicle, it is perfectly suitable for a standard height double deck body.

BOTH CHASSIS CAN BE FITTED WITH ALTERNATIVE POWER PACKS AND ENQUIRIES ARE WELCOME





DURABILITY

Every Dennis chassis is deep section and bolted and they are all fully protected against corrosion.

These are hand built products subjected to rigorous quality standards and they will endure for twenty hard years and more.



FLEXIBILITY

Dennis designs are for individual operators and we can give you choice. Choice of engine, choice of transmission, choice of low or standard height, choice of length – 10, 11 or 12 metres, choice of suspension, leaf or air. You are the customer – you make the choice.

DENNIS FOR DURABILITY FLEXIBILITY RELIABILITY AND SAFETY



RELIABILITY

Using only engines and transmissions which have been tested over millions of miles ensures that Dennis scores top marks in the most important aspect of all – vehicle reliability.

Availability figures in the 90% plus range are common experience. To this add well tried suspension systems, high quality components throughout and the basics must be right.



SAFETY

A combination of safety features has been built in to keep operators, passengers and drivers relaxed. These include dual line braking and fully automatic transmission with integral retarder. Full power steering gives finger tip driveability and an air dryer fitted as standard keeps brakes dry and effective.



Designed and produced by Format Publicity, Ref: F13k/7181



Glide through the 80's with the Dennis Falcon



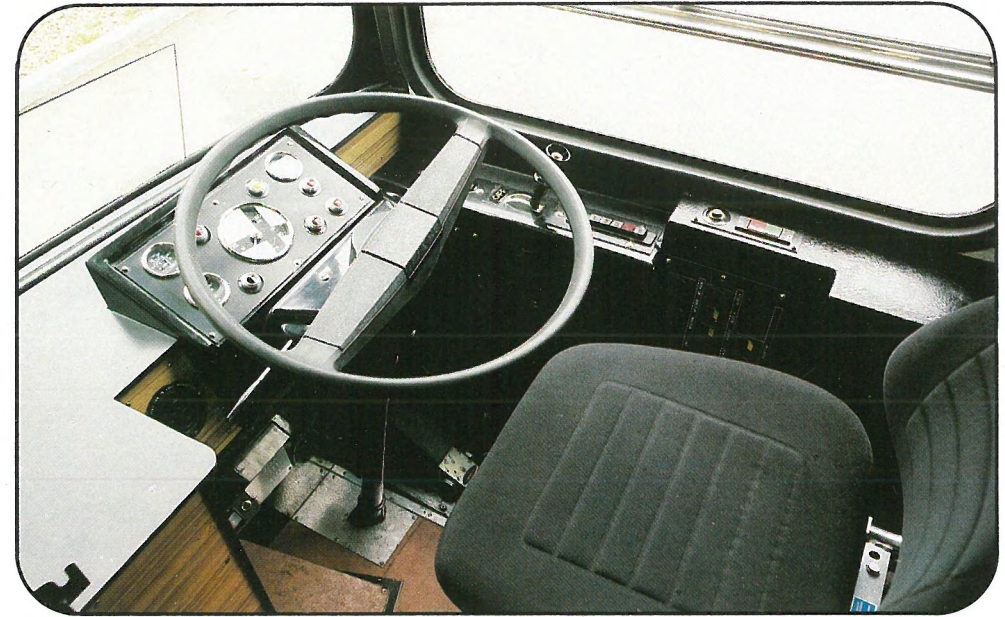
PASSENGER COMFORT

Dennis city buses have low flat floors throughout and wide entrances for effortless boarding. The full air suspension system gives a superb ride and great stability. Add to this low noise levels and smooth starting and stopping thanks to the automatic transmission and retarder and you will see why customers enjoy riding with Dennis.



DRIVER SATISFACTION

Apart from the ergonomically designed driver's cockpit which provides a perfect place of work, the driver will be delighted with the Falcon's power to weight ratio, its full power steering and superb roadholding. The full automatic transmission and big platform space for fare collection complete a package for the driver second to none.



DENNIS FOR PASSENGER COMFORT DRIVER SATISFACTION LOW OPERATING COSTS AND EASY MAINTENANCE



LOW OPERATING COSTS

High fuel economy engines have been chosen for the Falcons and modest weight plus component strength make for economy and low downtime. The use of an integral retarder extends brake and drum life many times and automatic chassis lubrication cuts service time.



EASY MAINTENANCE

Careful attention has been paid to the location of all assemblies to facilitate accessibility of all major components thus simplifying and speeding routine maintenance.