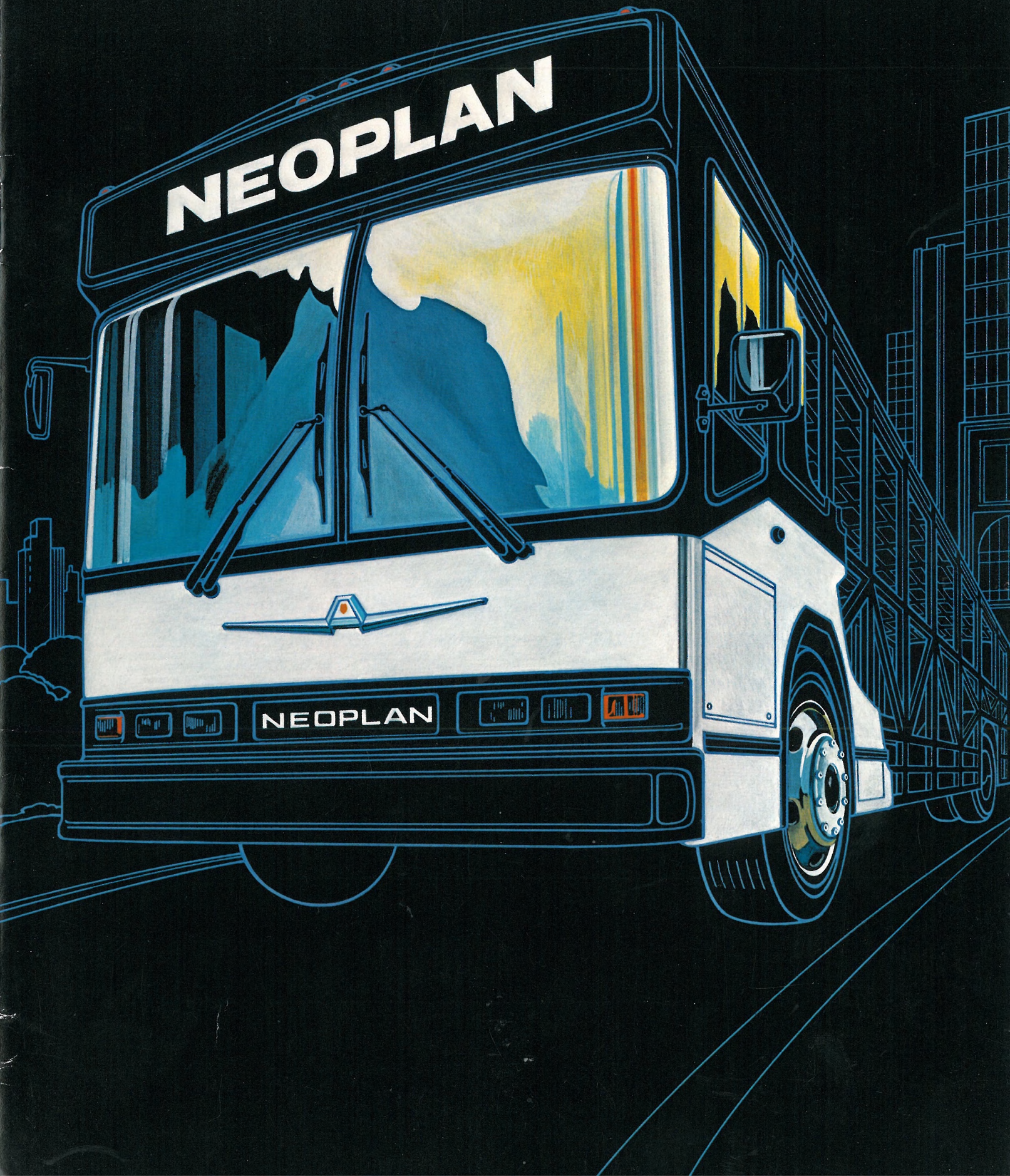


**NEOPLAN**

**NEOPLAN**





**NEOPLAN·USA·SALES**

Rolf Ruppenthal and Associates, Inc.  
825 South Broadway  
Boulder, Colorado 80303  
(303) 499-4040 Telex 450838

**NEOPLAN·USA·CORPORATION**

Manufacturing facilities in  
Lamar, Colorado and  
Montgomeryville, Pennsylvania

# AT NEOPLAN—USA—CORPORATION . . .

## OUR ONLY BUSINESS IS BUILDING BUSES . . .



**NEOPLAN—USA—CORPORATION**, with manufacturing, sales and service facilities in Colorado and Pennsylvania, is one of the most innovative bus manufacturers in the United States.

**NEOPLAN** opened its first U.S. plant in Lamar, Colorado in May of 1981, and was joined by the Montgomeryville, Pennsylvania facility in October, 1982. The company's growth has been ten-fold in the past two years—an indication of our quality engineering and product diversity.

**NEOPLAN—USA—CORPORATION**, with over 600 employees, joins the over 3,000 **NEOPLAN** workers internationally at plants in Stuttgart, Berlin and Pilsting, Germany, and in Ghana, West Africa.

**NEOPLAN'S** Lamar plant has the capability of producing a wide variety of transit buses for the transit needs of the U.S. The Montgomeryville facility is also a service center and finishing plant for the Northeastern U.S. On-site service follows **NEOPLAN** contracts throughout the country insuring continued quality to our customers.

**NEOPLAN** builds buses to specifications for our customers. We have been building buses since 1935—**our only business is building buses.**

# NEOPLAN

## AT NEOPLAN USA, WE KNOW BEAUTY . . .

At **NEOPLAN—USA—CORPORATION**, we know beauty is an image, and that the true test in the long run is Engineering Excellence and Quality Production. **NEOPLAN** incorporates nearly 50 years of technical and structural research in producing the most diverse line of products available in the United States.



### THE NEOPLAN ADVANCED DESIGN BUS

The **NEOPLAN Advanced Design Bus** is a 35- and 40- foot transit coach which has been produced for many of our current contract customers at our Lamar, Colorado production facility.

The **NEOPLAN "ADB"** offers a Detroit Diesel 6V92TA engine mounted "in-line" with an Allison HT747 transmission. The **NEOPLAN Independent Front Wheel Suspension System** offers superior handling and riding qualities. With our modern design, the **NEOPLAN "ADB"** stands out among transit coach manufacturers throughout the world.

### THE NEOPLAN JETLINER

The **JETLINER** is one of **NEOPLAN'S** most successful coaches with several hundred units being produced since its creation in 1973. It has matured into a reliable, economical over-the-road coach.

The **JETLINER** meets the highest passenger comfort demands with its luxury seating raised above the driver's area for maximum visibility; large, arched, gold-tinted windows; and individually controlled roof heating and ventilation as well as floor heating. It has the maintenance-free **NEOPLAN** air suspension system with independent front wheel suspension and a vertical pivot A-frame mount on the rear axle. The **JETLINER's** roomy, under-floor luggage compartment allows problem-free loading and unloading.





## . . . IS ONLY SKIN DEEP!!!

**NEOPLANS** on city streets from coast-to-coast meet transit needs with innovative solutions. We work cooperatively with transit agencies and private customers to build better buses. Only **NEOPLAN—USA—CORPORATION** has the design diversity to carry the smallest to the largest passenger loads.



### THE "LITL' BUS"

**NEOPLAN'S "LITL' BUS"** has many applications, incorporating all of the heavy-duty transit features in a small bus 26 feet long, 96 inches wide, and 105 inches high.

Components feature a Detroit Diesel 8.2 liter "Fuel Pincher" engine; an Allison AT545 fully automatic transmission; double action disc brakes on the front and air-activated drum brakes in the rear.

### THE SUPER SKYLINER

**NEOPLAN'S SUPER SKYLINER** is the most efficient way to transport 100 seated passengers in Park'n'Ride situations.

The ride comfort and high seating capacity of the double decker bus are conducive to increased ridership translating to lower operating cost, less maintenance, less fuel consumption, and less pollution per passenger mile.

Dimensions of the **SUPER SKYLINER** are 49 feet in length, with four axles, including two steerable front axles. Components include a Detroit Diesel Allison 8V92TA engine and an Allison HT740 transmission.



### THE NEOPLAN ARTICULATED BUS



**NEOPLAN'S ARTICULATED BUS** design utilizes the latest bus engineering experiences by placing the engine in the rear of the trailer and driving the last axle (pusher type).

This modern **ARTICULATED BUS** decreases operating costs moving more passengers with less fuel and labor.

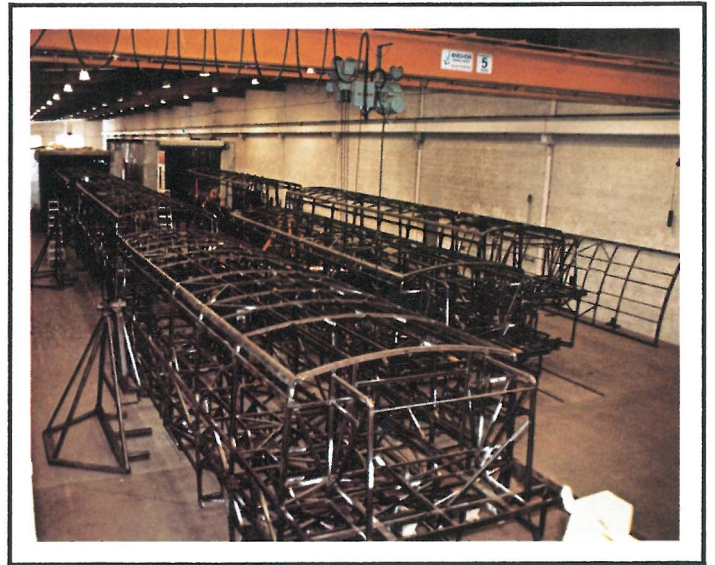
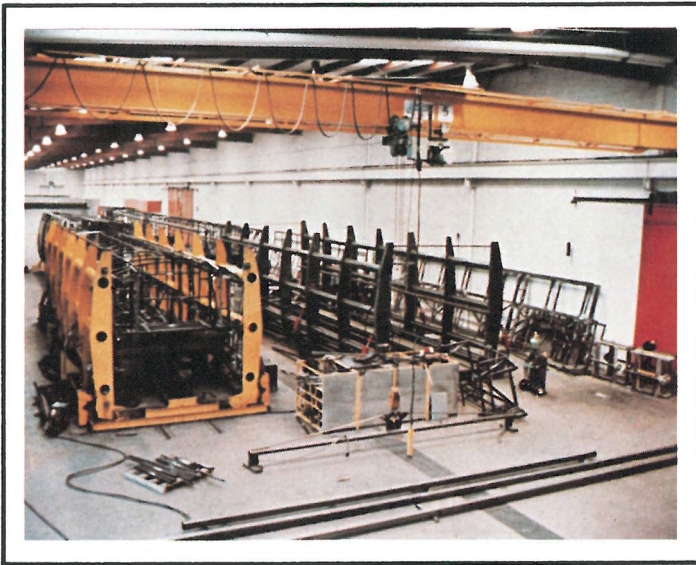
Components of the **ARTICULATED BUS** include a Detroit Diesel Allison 8V92TA engine mounted in the rear for easy maintenance accessibility coupled with a Detroit Diesel Allison HT740 automatic transmission. Air conditioning features compressors of advanced design incorporating evaporators, condensers, and automatic controls in corrosion-proof fiberglass modules on the roof of each section.

Dimensions of the **ARTICULATED BUS** are 55 or 60 feet in length, 96 or 102 inches in width.

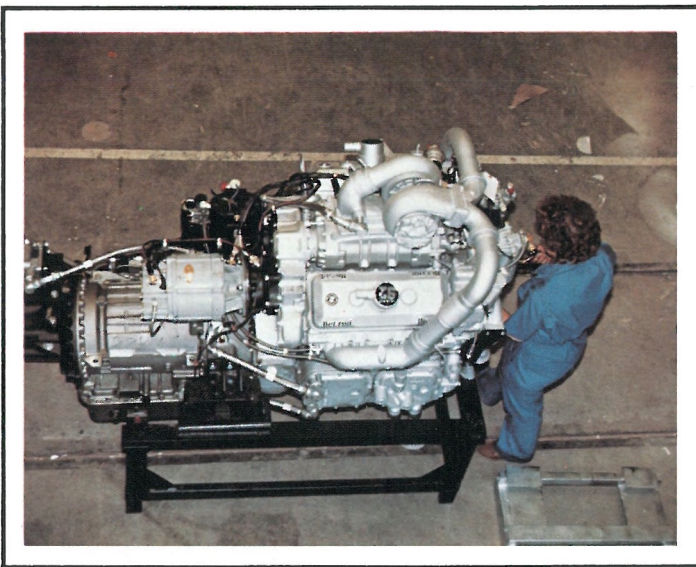


# AT NEOPLAN—USA—CORPORATION . . .

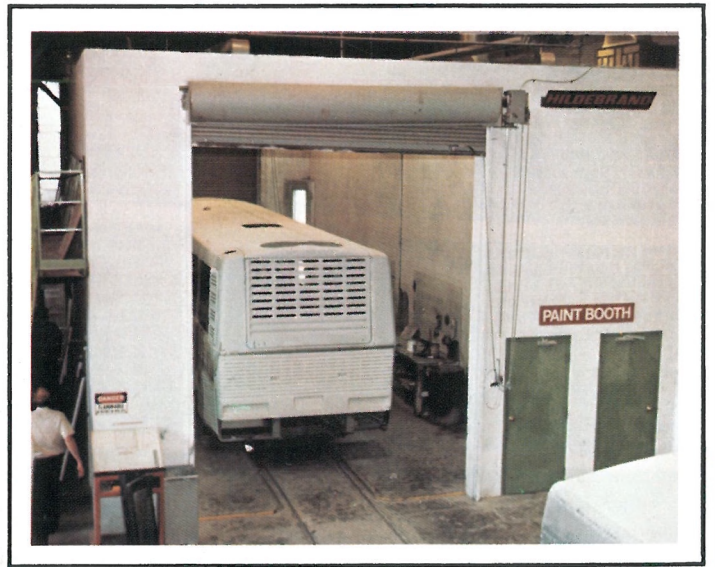
At NEOPLAN—USA—CORPORATION, quality control is not only the function of the Quality Control Department, but the aim and responsibility of every employee on the line.



Completed skeletons are removed from the final jigs and rust-proofed.



The drive train (Detroit Diesel Allison) is mounted on a sled for easy and fast installation and removal.



Once the exterior of the bus has been completed, the bus is taken into the paint booth for surface priming and treating. NEOPLAN uses the most resilient paint available to protect against scratches, chips and fading.

# NEOPLAN **QUALITY** BUSES

## . . . QUALITY IS OUR MIDDLE NAME

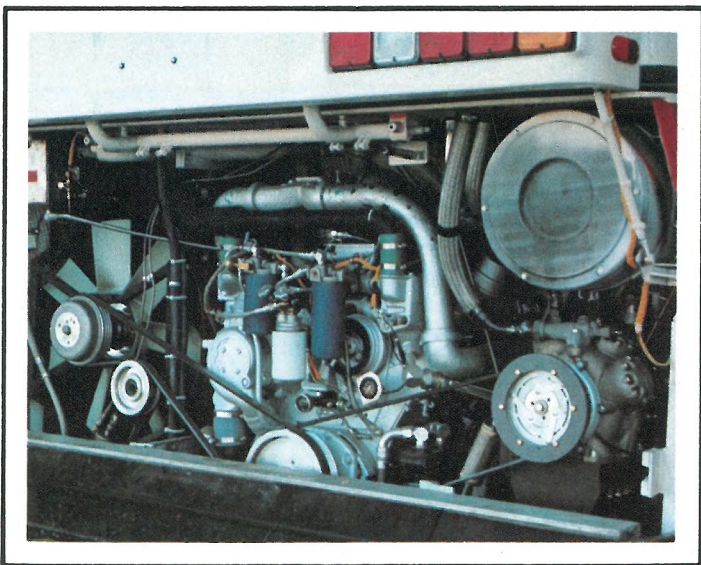
The structural skeletons of the buses are engineered for maximum strength and durability utilizing the **NEOPLAN MONOCOQUE DESIGN**. Beginning at one end of the production line with special steel tubes, the different components are assembled to guarantee the utmost in passenger safety.



In the final finishing area, all interior components such as seat, drive trains, air conditioning, flooring, insulation, trim panels, etc., are installed.



**NEOPLAN** performs a complete dynamometer test on every vehicle before shipping to the final destinations.



Cost-saving maintenance is one of the built-in features of the **NEOPLAN** bus. These features were developed in cooperation with our customers among the transit agencies in the United States.



**NEOPLAN** buses are available with special options at the request of the customer. These options can include air conditioning, kneeling features, wheel chair lifts, Telma Retarder, etc.

