



Royal Class: Buses are built this way



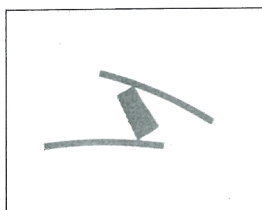
NEOPLAN

One step ahead of progress

**The NEOPLAN touring coaches:
Unmistakable in design.
Unparalleled in comfort**



**NEOPLAN:
Achievements in the
'90s**



Innovation Prize of
German Industry

1990: Bus of the year

1991: "Most beautiful bus
of the year" and "Most
beautiful bodywork design"
at Car & Bus in Kortrijk.

1992: Lehner medal for
Bob Lee, Technical Director
of NEOPLAN

1993: Special prize for
innovative product
management to the Inno-
vation Prize of German
Industry

NEOPLAN – this stands for first class design and technology. This is know-how and competence resulting from almost 65 years of experience: a range of buses, which is unparalleled worldwide. For good reasons NEOPLAN is considered amongst experts to be the most innovative company in this market. Our buses appear more attractive than ever before: unmistakable in shape. Unmistakable in profile. The consistently and aerodynamically optimised design is impressive with the extraordinarily styled front section, with the elegant spoilers, with the compact, rounded profile, with the convex side windows, with windows dynamically pointing forwards ... By combining leading design and trend-setting technology we can offer you comfort which leaves no wishes open in



any respect. NEOPLAN – this is progress through experience, for which our Royal Class bears the crown: the touring coaches from NEOPLAN. Spaceliner. Skyliner. Coaches, which pamper in an extraordinarily attractive way.

1995: The overall-winner and winner of the design, styling, and comfort competition of the europe-bus-week in Kortrijk.

1996: On the IAA the Starliner becomes for the first time a line compartment in the present and found on first cut to like on numerous people.

1997: The beginning of the Starliners series production.

1998: The Centroliner and the Euroliner are on the IAA 1998. The Starliner becomes the 'Bus of the Years' selection for 1998.

1999: The international jury for the 13 European Magazines selected in Kortrijk the 13.70 m long Starliner for 'Coach of the year' 2000. NEOPLAN receives as first manufacturer 3 times the winning cup. With this title, it becomes the first 'Coach of the year' of the new millenium.



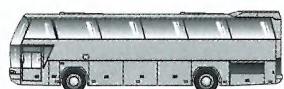
The NEOPLAN Spaceliner – luxury and quality

without compromise

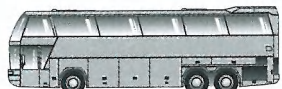


Perfect technology in an absolutely fascinating form: NEOPLAN Spaceliner, the "divinely" attractive bus for holiday destination transport. Equipped with everything that makes travelling more pleasant: Passenger space with a panoramic view and outstanding comfort. Compact cooking space, huge luggage space.

The Spaceliner brings your passengers relaxed to the destination of their wishes. Non-stop, if you want. For even the crew travel first-class in the spacious lower-deck cockpit. Undisturbed and able to fully concentrate, with separate airconditioning and music if required. The NEOPLAN Spaceliner — highest standard



N 117



N 117/3 H



N 117/3 Lounge



N 117/3 L Lounge

Thoroughly equipped for long distance journeys:

the Spaceliner

In the Spaceliner, in many respects you float above things. The travelling guest in the 12 m long passenger compartment enjoys the same comfort as in an aeroplane. In the lower-deck cockpit, sleeping cabin attached, the driver and his crew can concentrate on their tasks at leisure.

And as a touring coach company, you can take full advantage of the Spaceliner's low fuel consumption and reliability. But this is not the only way NEOPLAN sets standards for long distance buses. The Spaceliner demonstrates its efficiency as a 2 or 3 axled vehicle.

With comfortable seating for 48 to 65 passengers. And with innumerable possibilities to suit your own special requirements.

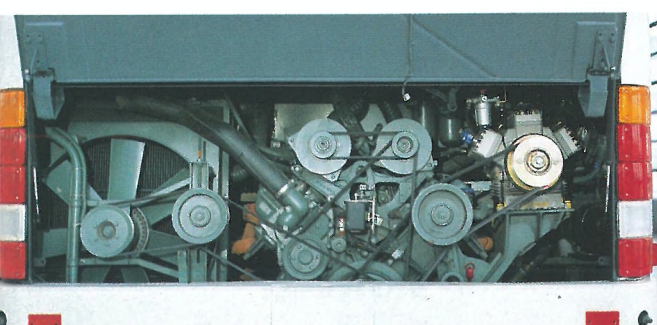
Getting on to go up: the front entrance with wide opening door and low steps makes the first step in the direction of a holiday pleasure.



And of course in the Spaceliner: easy engine maintenance, due to the wide opening engine cover of the Skyliner: for the best possible access to all parts of the engine.

Due to the superior road illumination with the PES light system the driver has full vision even at night.

Whatever one wants to take on long-distance journeys: the Spaceliner offers storage space for any amount of holiday luggage.



The two-part front wind-screen provides the driver and passengers with maximum view through minimal area. At the same time the aerodynamic styling means the lowest air resistance, lowest fuel consumption and minimal wind noise. Just a typical NEOPLAN.



You can see on the Space-liner, that the detail work lovingly carried out by NEOPLAN is worth the effort: the rear section is in perfectly "good shape".





The NEOPLAN Skyliner – the original of all double-decker touring coaches: often copied, never equalled.





An authority in matters of efficiency and a role model of luxury. The Skyliner is the prototype for double-decker coaches and the undisputed Number 1 in this category. Scarcely known when it was introduced 27 years ago, the Skyliner concept has today succeeded everywhere.

Meanwhile over 3000 Skyliners, successful luxury-class liners with many variations, are on the move in 24 countries of the world. The optimal interior furnishings with the typical NEOPLAN fittings give this bus its unrivalled flair.

Fantastically comfortable four-star seating, a dream-like panoramic view and the pleasant air conditioning on board show the travellers the best side of travelling – from departure to arrival – a first class holiday on two levels. The NEOPLAN Skyliner: the double pleasure of enjoying luxury-class travel comfort.



N 122/3



N 122/3 L

A standard for safety, comfort and efficiency:

the Skyliner

The NEOPLAN Skyliner is the first double-decker touring coach worldwide. Right from the start we were at the forefront – and we remain market leaders today. No wonder, since the Skyliner is impressive with its progressive technology, as well as its unique interior.

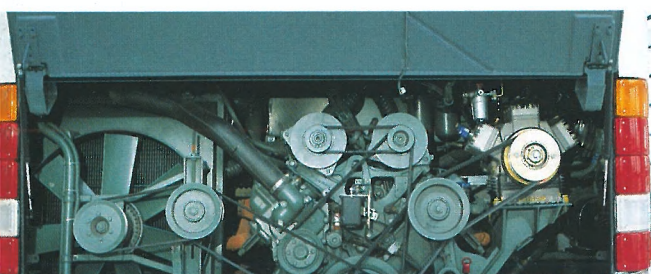
The Skyliner is and remains the original, which has no equal. A luxury vehicle with an impressive panoramic view. A spacious vehicle which achieves its aims profitably – and is extremely safe on route. The main point on all Skyliners is to provide excellent roadholding and hence good traffic safety.

The Skyliner offers you the choice between many options in technology and fitting. As a three, four or five-star coach with small or big luggage space. Whichever model you choose – each Skyliner offers a large amount of space. On the upper deck – the height of luxury. And an extraordinary amount of space on the lower deck.



Due to the extremely wide central entrance each passenger can reach his seat in the upper or lower deck quickly and comfortably.

For boarders who manage the steps without any trouble: the inviting width, the safe tread and the comfortable height of the steps enable a fast flow of passengers even when dismounting.



The wide opening engine cover ensures the best possible and easy access to all parts of the engine.

The new streamlined shape with rounded cross-section and the aerodynamically styled upper windscreen ensures even lower air resistance. This makes the Skyliner economical to use and reduces noise level to a minimum. Therefore it has a specially low and compact appearance.

Welcome on board:
With large dimensions and cosy furnishings, the lower deck offers enough room for a delicious snack. Or for stimulating conversation with pleasant fellow-travellers.



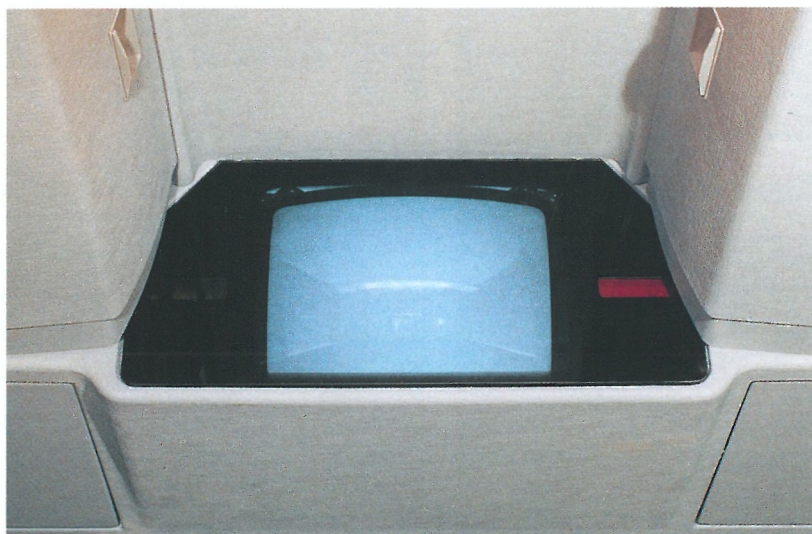
With the successful styling the Skyliner has a positive elegance right up to the ceiling. The vertically arranged lights give a clear sig-

nal and underline the functional appearance. Perfect bodywork design – by NEOPLAN.



With optimal space utilization there is sufficient storage space for even the largest luggage.





The royal class in detail: the exclusive interior design

Seating comfort in a new form

The super-comfortable reclining seat offers the best possible relaxation on long journeys and the highest level of freedom of movement. With the

seat covers you have a free choice from a large number of designs and colours as well as matching ceiling fabrics and carpets of the best quality and many designs. So your NEOPLAN gets stately furnishings exactly according to your own taste.

Allround cosiness

Without a sound the convector heating creates perfectly warm cosiness in no time.

Ideally integrated

Ideally built into the ceiling – the video monitor is thus also ideally placed in the passenger area: without reducing the room height. This ensures perfect headroom even when boarding.

First-class air conditioning

Guaranteed individually controllable: the functionally placed nozzle ventilation offers each passenger his own "comfortable air-conditioning". Also harmoniously built into the console: flush switches for hostess call and reading lamps as well as loudspeaker.



Everything in view – everything in reach

The NEOPLAN cockpit: outstanding with its optimal vision, convenient control panels and clearly arranged dazzle-free control instruments. Automatic tachometer disc insert and digital speed displays are built-in as standard, like the flush radio/cassette deck and the electro-pneumatic steering-wheel adjustment. Located on the new one-spoke steering wheel, with an ideal view of the instruments, is a keyboard

for radio operation. And a control monitor provides the best view for reversing and for checking the upper deck.

Well-being en route

Perfect hygiene – in fresh colours and made from cast iron: the WC on board offers hygiene and comfort. With an environment-friendly chemical toilet or with water flush.

Fresh breeze

The standard sliding roofs allow a fresh breeze as required for every NEOPLAN touring coach. They obviously meet the new EC regulations in matters of emergency exits. Additional security is provided by automatic locking when the vehicle is closed.

Useful extras

The co-driver seat offers additional extras: from illuminated worktable, separate storage and useful refrigerator to optimal leg room. Just typical NEOPLAN features.

The royal class in detail:

technical equipment – latest state-of-the-art

It is the declared aim of NEOPLAN to continuously find optimal solutions: to more efficiency, to better travel comfort and to better road safety.

The NEOPLAN chassis – an example of active and passive road safety

NEOPLAN buses are well-known for their ideal road performance. A determining factor in this is the combination and perfect coordination of the drive components. The technical design is as brilliant as it is

simple: independent front suspension by means of double wishbones with air bellow suspension and shock absorber on each wheel. At the rear a hypoid rear axle mounted on the NEOPLAN A-frame with three maintenance-free mounting points, as well as extremely wide separated suspension pistons lying outside the vehicle track.



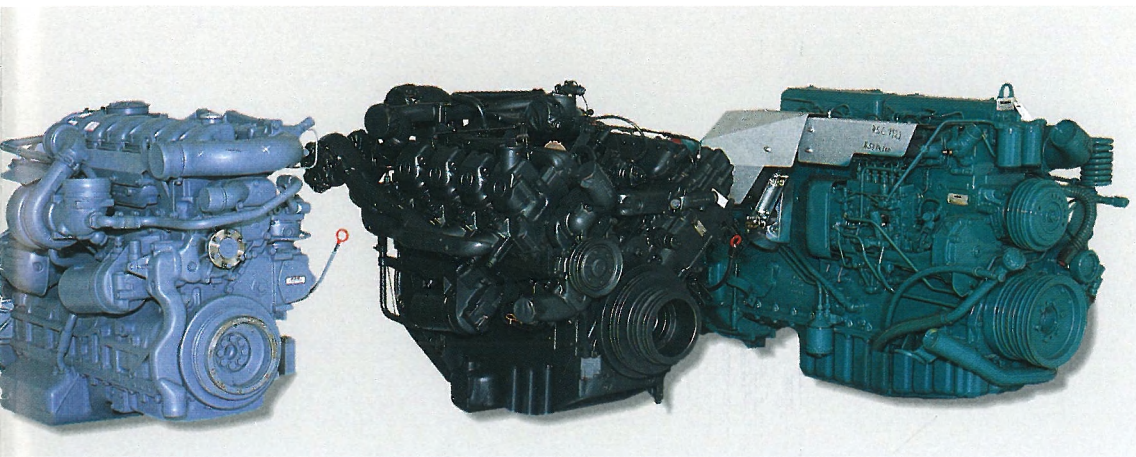
The external mirror

Its curved shape makes the buses even more aerodynamic – with optimal vision to the rear and downwards for the driver.

Best light for best visibility

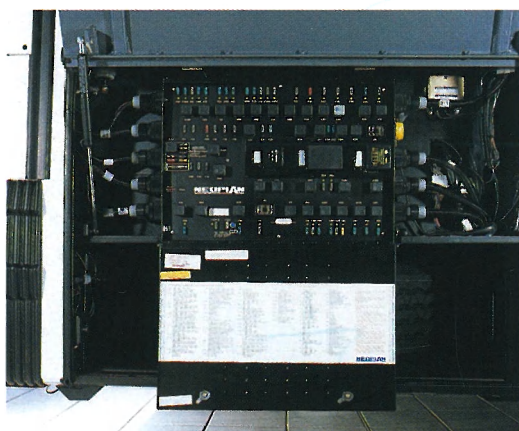
The maintenance-free PES system with built-in fog lamps which are easily adjustable.





Under the bonnet: power and efficiency, as much as you want

For the NEOPLAN royal class you have a choice of parts from MAN and Mercedes-Benz. With engine output to suit all needs and requirements: from 213 kW (290 HP) to 385 kW (523 HP). Cylinder capacity from 11 to 14.6 l. Type according to requirements: 6-cylinder in V or in-line motor, or V8, each turbocharged and charge air cooled. In this way, these buses not only move smoothly but also have sufficient power reserves for climbing and powerful stamina for long journeys. Whatever you decide – with a NEOPLAN you will always travel well and extremely efficiently.



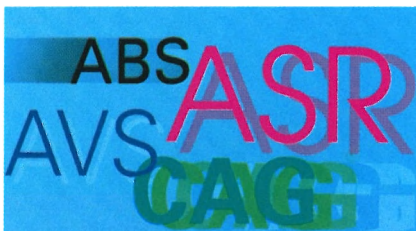
Electrics at a glance

The clearly laid out and easily accessible central electrics allow all electrical functions to be checked at a glance: clearly organised and with connections for diagnostic plugs.



The NEOPLAN safety package

For the optimum in safety, efficiency and travel comfort NEOPLAN offers suitable modern systems. The dual pneumatic disc brakes use ABS as standard. In addition each NEOPLAN bus can be supplied with safety components from all leading manufacturers: with anti-slip control for optimal tracking and steering stability on snow, ice and wet roads. A hydrodynamic eddy-current brake (retarder) conserves the corrosion-free additional



brakes, the brake linings and tyres and ensures road safety particularly on sloped surfaces. And the AVS or the new AS-Tronic gear-drive electro-pneumatic shifting supports, which prevent shifting errors, preserve the gearbox, save fuel and considerably aid the driver.



Technical delights

The independent wheel suspension on the front axle allows a turning angle of 55 degrees. This means an enormously reduced turning circle for each bus.

Compact air-conditioning

The air-conditioning unit is just in the right place: evaporators and condensers are compactly stored at the rear. Fewer freon conduits mean fewer coolant and thus a higher level of environment-friendliness.

Technical data

SPACELINER	N 117/2	N 117/3	N 117/3 Lounge	N 117/3 L	N 117/3 L Lounge
Main dimensions in mm					
Length	12.000	12.000	12.000	13.700	13.700
Width	2.500	2.500	2.500	2.500	2.500
Height	3.620	3.780	4.000	3.780	4.000
Wheel base	5.950/5.800	5.450	5.400/5.300	6.350	6.350
Wheel base 2/3 axle		1.300	1.300	1.300	1.300
Front overhang	2.870	2.870	2.700	2.870	2.870
Rear overhang	3.180/3.330	2.380	2.600/2.700	3.180	3.180
Turning circle	21.450	20.950		23.900	23.900
Standing height in centre aisle	1.985	1.985		1.985	
Standing height top/lower deck			1.610/1.845		1.610/1.845
Height of centre aisle above roadway	1.425	1.585		1.585	
Weight in kg					
Front axle load	7.000	7.000	7.000	7.000	7.000
Centre axle load		11.500	11.500	11.500	11.500
Rear axle load	11.500	7.000	7.000	7.000	7.000
Total perm. weight	18.000	25.500	25.500	25.500	25.500
Volume					
No. passengers with*** bus	53 (+2)	53 (+2)		59 (+2)	61 (+2)
No. passengers with**** bus	48 (+2)	48 (+2)		54 (+2)	56 (+2)
No. passengers with***** bus	44 (+2)	44 (+2)	44 (+2)		
Luggage space (cbm)	13				
Fuel tank capacity (litres)	530-580	580-640	580-640	580-640	580-640

Technical data

SKYLINER	N 122/3	N 122/3 L
Main dimensions in mm		
Length	12.000	13.650
Width	2.500	2.500
Height	4.000	4.000
Wheel base	5.550	6.800
Wheel base 1/2 axle		
Wheel base 2/3 axle	1.300	1.300
Wheel base 3/4 axle		
Front overhang	2.490	2.590
Rear overhang	2.660	2.960
Turning circle	21.200	24.900
Standing height top/lower deck	1.820/1.650	1.820/1.650
Entrance height	350	350
Weight in kg		
Axle load 1		
Axle load 2		
Axle load 3		
Axle load 4		
Front axle load	7.500	7.500
Centre axle load	11.500	11.500
Rear axle load	6.500	6.500
Total perm. weight	26.000	26.000
Volume		
No. passengers with***bus	75 (+2)	
No. passengers with****bus	70 (+2)	78 (+1)
No. passengers with*****bus	60 (+2)	66 (+1)
Luggage space (cbm)	11	13
Fuel tank capacity (litres)	620	620

NEOPLAN
Gottlob Auwärter GmbH + Co. KG
Vaihinger Strasse 118-122
D-70567 Stuttgart
Telephone: 07 11/78 35-0
Telefax: 07 11/78 0 16 96
Internet: <http://www.neoplan.de>



NEOPLAN
One step ahead of progress