

A photograph of a Volvo 8700 Low Entry bus at a bus stop. The bus is olive green and has a low floor for easy access. A woman in a grey coat is boarding the bus. A woman with a baby in a stroller is also at the stop. A man is walking nearby. A blue sign with a white bus icon is visible. The background shows trees and a clear sky.

**VOLVO**  
**8700**  
**LOW ENTRY**

VOLVO

PL D0-002

**VOLVO**

# **VOLVO 8700 LOW ENTRY**

The Volvo 8700 Low Entry is a modern and comfortable intercity bus with a low boarding height, designed for convenient entry and exit and swift passenger throughflow. The Volvo 8700 Low Entry is based on our new TX platform for intercity buses and coaches. This ensures extremely high quality and uptime, allied to excellent safety standards and good environmental properties.





## HIGH COMFORT AND SAFETY

The Volvo 8700 Low Entry offers high comfort, not least owing to features such as a rigid frame, independent front suspension, a comfortable interior, good sound insulation and a new, highly efficient electronically controlled ventilation system. Entry height at the front is 320 mm above the road surface with 275/70 tyres, and this can be lowered a further 90 mm by activating the kneeling function. In order to ensure a smooth transition between the front and rear sec-

tions, the floor inclines gently towards the rear. The body is constructed entirely in-house at Volvo, and it is made of stainless steel. It is designed to meet the ECE R66 safety standard, and it encompasses reinforcements along the body sides. The passenger seats offer a range of adjustments, and feature two-point or three-point seat belts and child booster cushions.





Boarding height at the front is 320 mm and this can be lowered a further 90 mm with the kneeling function.



The Volvo 8700 is available in two variants: Intercity and Low Entry.



The new front offers a modern, purposeful appearance.

## HIGHLY MANOEUVRABLE

The independent front suspension compensates for unevenness in the road and offers excellent road feedback. The turning circle is small enough for you to handle the bus even in narrow and congested city streets. The light power steering is effective even at low road speeds. The Volvo 8700 Low Entry is equipped with Volvo's patented electronically controlled disc brakes, which react with lightning speed and provide uniform braking effect at all times. The braking system also features ABS anti-locking brakes and ASR. The automatic transmissions feature an integrated retarder.



The bus can be equipped with a ramp for wheelchair access.

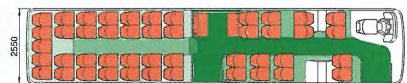
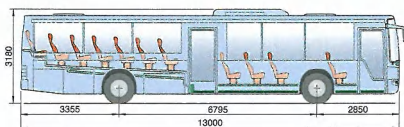


The Volvo 8700 Low Entry features comfortable seats, a wide centre aisle and spacious luggage shelves.



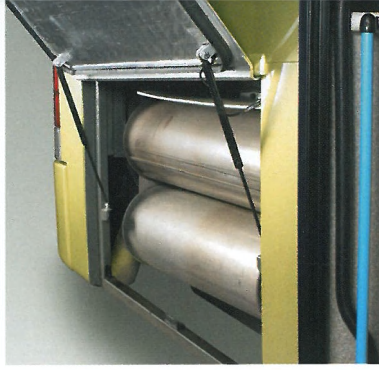
Child booster cushions are available as an option.

The Volvo 8700 Low Entry is available with two or three axles, and in lengths from 12 to 14.5 m. There is a wide selection of door combinations, with single or double doors at the front and in the middle.

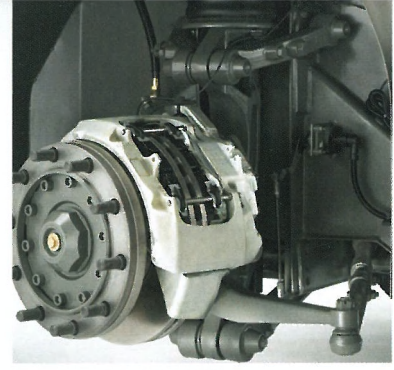




Well-placed brake lamps.



The body, frame and exhaust system are all made of stainless steel.



Suspension. The Volvo 8700 Low Entry is equipped with electronically controlled independent front suspension that features a kneeling function, which makes for high comfort and smooth progress.

## FULL CONTROL

The driver's compartment in the Volvo 8700 Low Entry is spacious and effectively sound-insulated and offers you full control over both your vehicle and the surrounding traffic. The driver's seat offers a generous range of adjustment and comes with a three-point seat belt. The temperature in the driver's compartment can be adjusted extremely precisely thanks to separate control of the climate unit. New highly effective headlamps provide a powerful and broad beam of light. The instruments are clear and easy to overview, the controls are located within convenient reach and the adjustable, grip-friendly steering wheel is positioned such that the distance between the steering wheel and pedals ensures a comfortable angle for the feet. The instrument panel accompanies the steering wheel when it is adjusted, so you always have the instruments at the right distance and the most convenient angle. Generous glass panels and the large rear-view mirrors provide good field of vision all round. You can also specify a reversing camera for full visibility behind the bus.

## HIGHER RELIABILITY WITH NEW ELECTRONICS

The instrument panel has an information display that is linked to the on-board electronic system. If a serious fault occurs, the driver is alerted and advised to stop, and the display indicates what has happened. In the event of a minor problem, the display shows what should be rectified. When the time for the next service approaches, the electronic system provides plenty of advance warning. In addition, the driver can check how much fuel the bus is using at any given moment in time, over a given distance or over a specified period of time. Functions such as coolant level, oil level, oil pressure, brake pressure and turbo boost are all checked automatically by the electronic system and are indicated in the display unit. This check is done every time the bus is started.



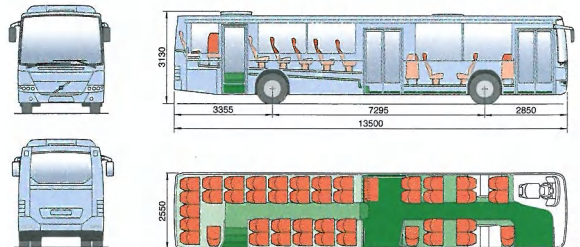
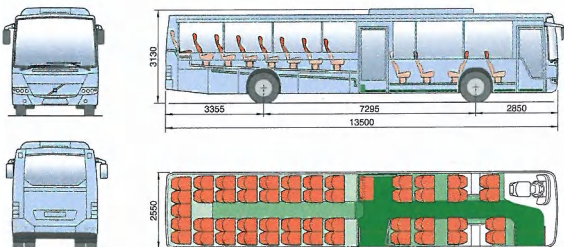
The driver's environment is spacious and ergonomically designed.

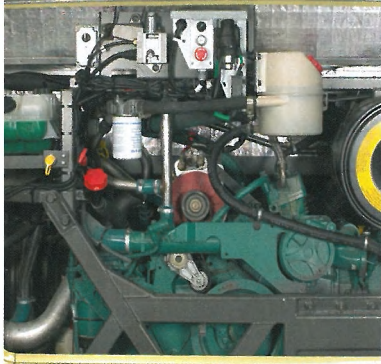


Information from the bus's electronically controlled functions is shown in a display unit.



The instrument panel moves with the steering wheel when this is adjusted, so you always have the instruments at the correct distance and angle.

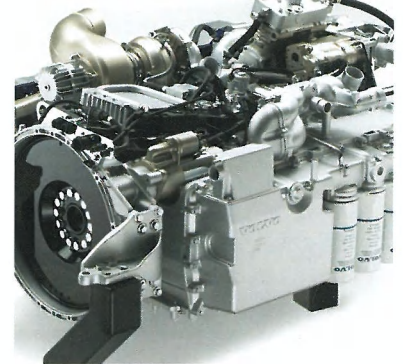




All the components are grouped together to simplify service.



The Volvo 8700 Low Entry can be equipped with an auxiliary heating system.



The fuel-efficient 12-litre engine offers excellent driveability and low emissions.

## POWERFUL 12-LITRE ENGINE

The engine, the Volvo DH12, is an electronically controlled fuel-efficient 6-cylinder diesel engine with a displacement of 12.1 litres and an output of 340 hp. The engine offers high torque throughout the rev range to ensure good driveability, and it is installed at the rear of the bus. This makes it possible to create a low floor without encroaching on the passenger compartment.

The Volvo DH12 is approved according to Euro 3, which in itself means emissions are low. If you want to reduce emissions still further, you can specify the Volvo Exhaust Filter or oxidising catalytic converter. The Volvo Exhaust Filter cuts emissions of hydrocarbons, carbon monoxide and particulates by 80 to 90 percent and requires the use of low-sulphur diesel fuel (< 50 ppm) to function as intended. If you do not have access to this grade of fuel, you can instead equip your bus with an oxidising catalytic converter which reduces emissions

of carbon monoxide and hydrocarbons by about 60 percent. Thanks to an efficiency rating of up to 45 percent, the Volvo DH12 also has a low fuel consumption and produces low carbon dioxide emissions.

## LONG SERVICE LIFE

The frame is a stiff and lightweight precision-welded box-section structure made of stainless steel, the same material used for the body itself. This choice of material brings benefits in terms of high corrosion resistance and a long service life. The exhaust system, catalytic converter and exhaust filter are all also made of stainless steel.

The engine oil-change intervals extend all the way to 60,000 km. The service intervals for the new rear axle extend even higher to 400,000 km. The propshaft joints are entirely lubrication-free.



## VOLVO 8700 LOW ENTRY

### Facts

#### Engine

Volvo DH12 producing 340 hp (1200/1700 Nm).

#### Transmission

Automatic transmissions.

#### Rear axle

Rear axle with a choice of 4 ratios for best performance within each application area.

#### Suspension

Electronically controlled air suspension with kneeling function. Independent front suspension.

#### Braking systems

Volvo electronically controlled disc brakes, ABS, ASR. An integrated retarder is fitted as standard.

#### Driver's environment

The driver's environment is spacious, effectively sound-insulated and ergonomically designed, with easily accessible controls and an adjustable steering wheel and instrument panel.

#### Body

Stainless steel body gives a strong, corrosion-resistant and easily maintained bus with low weight and long service life.

#### Passenger environment

A spacious, comfortable and safe passenger environment with a pleasant climate and a low noise level. There is a generous selection of equipment alternatives, including a fully automatic highly efficient ventilation system, three-point belts, child booster cushions and several comfort enhancing options.

#### Doors

There is a wide range of door combinations to choose from, with single doors or double doors at the front and in the middle. Single door at the rear (1+1+0, 2+2+1).

#### Gross weight

Maximum gross vehicle weight for the two-axle variant is 18,400 kg, or 23,000 kg for the three-axle version.

#### Length

Two-axle version: 12, 13 or 13.5 m. Three-axle version: 14.5 m.

#### Width

2.55 m.

# VOLVO

Volvo Bus Corporation

Göteborg, Sweden  
[www.volvo.com](http://www.volvo.com)