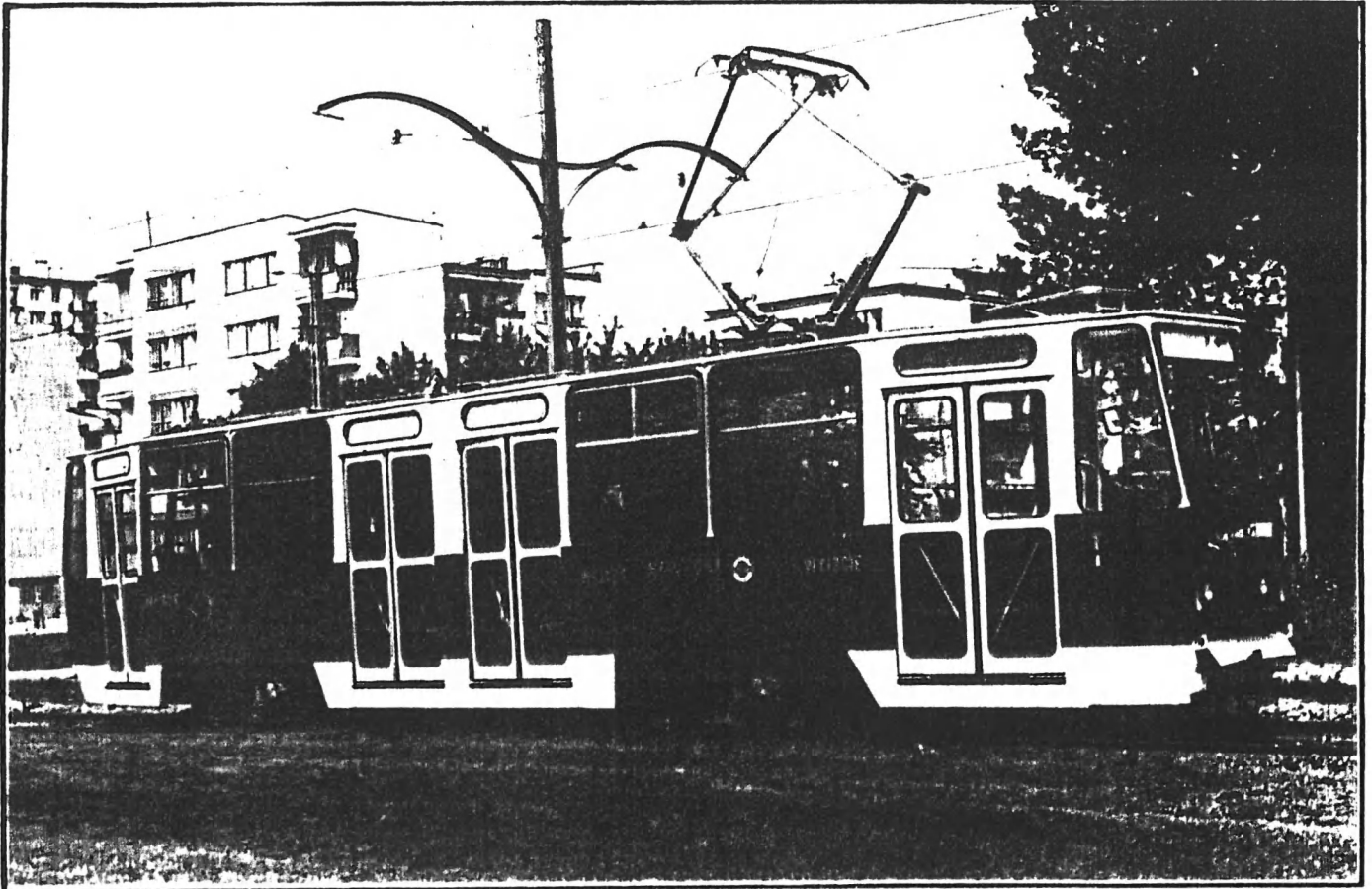


**TRAMCAR WITH AUTOMATIC
STARTER CONTROL TYPE**

105N



The Tramcar Type 105N is designed for municipal transport purposes, in one-direction passengerflow traffic and as one- or multiple-car sets.

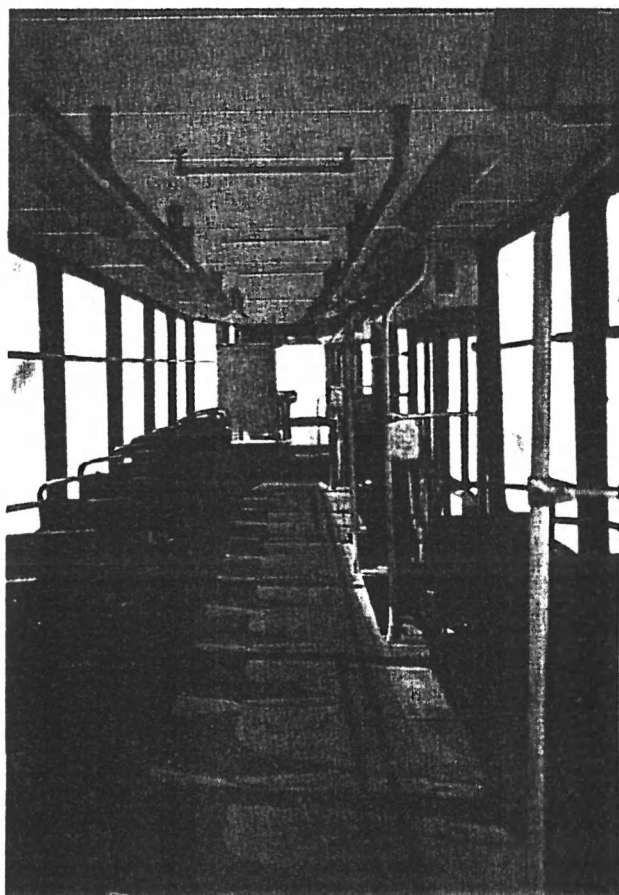
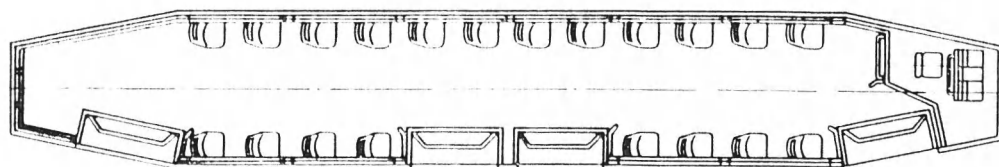
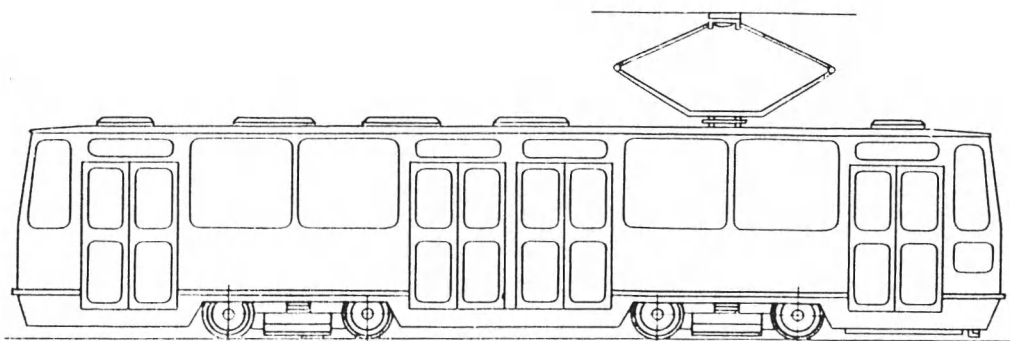
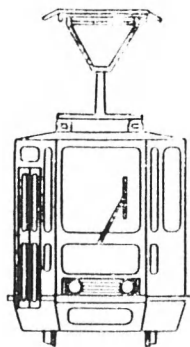
The car body is suspended on two bogies, each of them two-axled, with every axle individually driven by an electric motor.

Manufacturer:



Exporter:





CHARACTERISTIC TECHNICAL DATA

Track Gauge	1435 mm
Overall Length (without couplings)	13500 mm
Car Width	2400 mm
Number of Seats	20
Nominal Capacity	125 passengers
Car Weight	16500 kg
Line Rated Voltage	600 V
Motors One Hour Rating (4 - 41.5)	166 kW
Top Speed	72 km/h
Average Acceleration	1.4 m/s ²
Maximum Deceleration	2.6 m/s ²
Service Braking	electro-dynamic + clasp brake
Emergency Braking	electro-dynamic + rail brake + clasp brake

Manufacturer:



CHORZOWSKA WYTWÓRNIA
KONSTRUKCJI STALOWYCH
„KONSTAL”
Metalowców 7, 41-501 Chorzów – POLAND
Telex: 0312451

Exporter:



FOREIGN TRADE ENTERPRISE OF
THE RAILWAY ROLLING STOCK
INDUSTRY UNION "TASKO"
Mokotowska 49, 00-542 Warszawa – POLAND
Phone: 28-44-41
Cables: Kolmex-Warszawa
Telex: 813270
P.O.Box. 236, 00-950 Warszawa